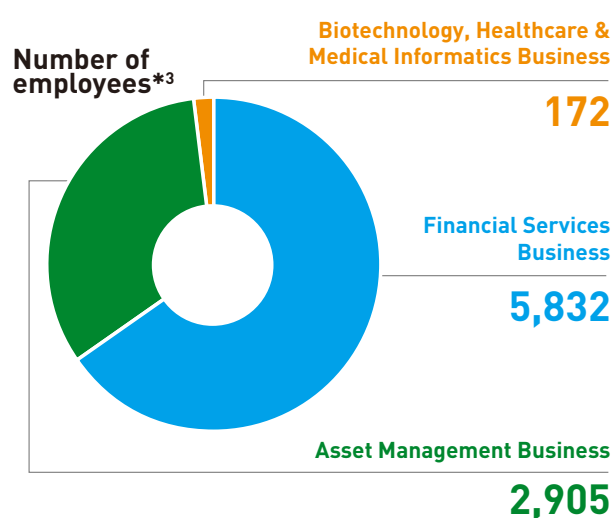
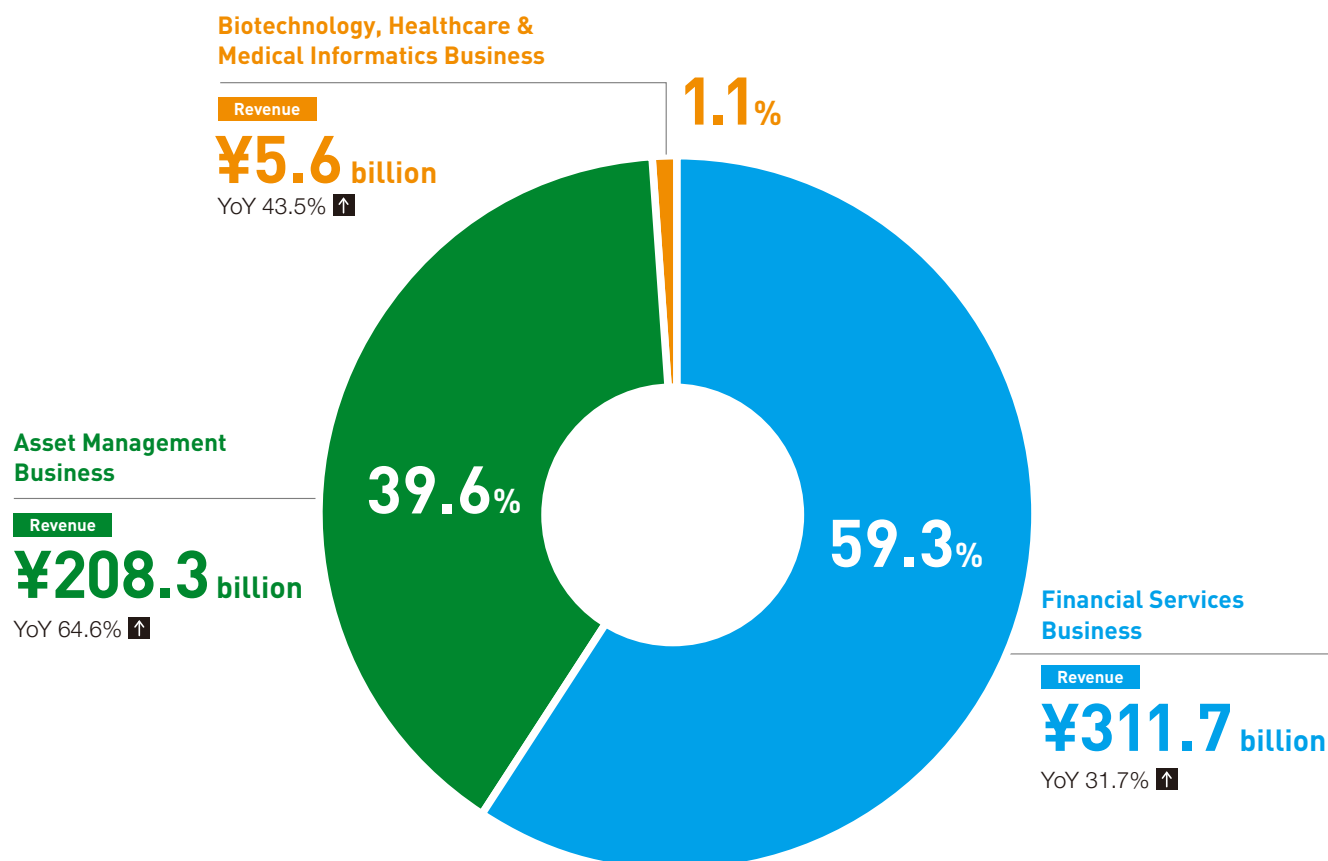


At a Glance

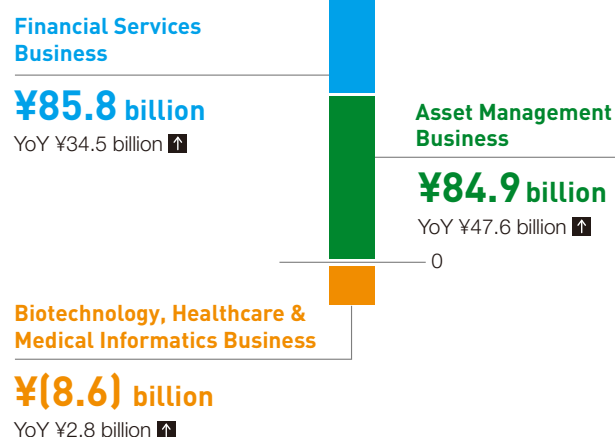
Overview of the SBI Group's Business Operations (FY2020)

SBI GROUP AT A GLANCE

Revenue breakdown by business segment*1, 2



Profit before income tax expense*2



*1 The ratio of revenue breakdown by business segment is presented as the composite ratio of the total revenue of Financial Services Business, Asset Management Business and Biotechnology, Healthcare & Medical Informatics Business

*2 Owing to Group company segmentation realignments, the figures compared to FY2019, which reflect the relevant segment changes, are shown as year-over-year figures

*3 Excludes 300 people, such as shared Group employees